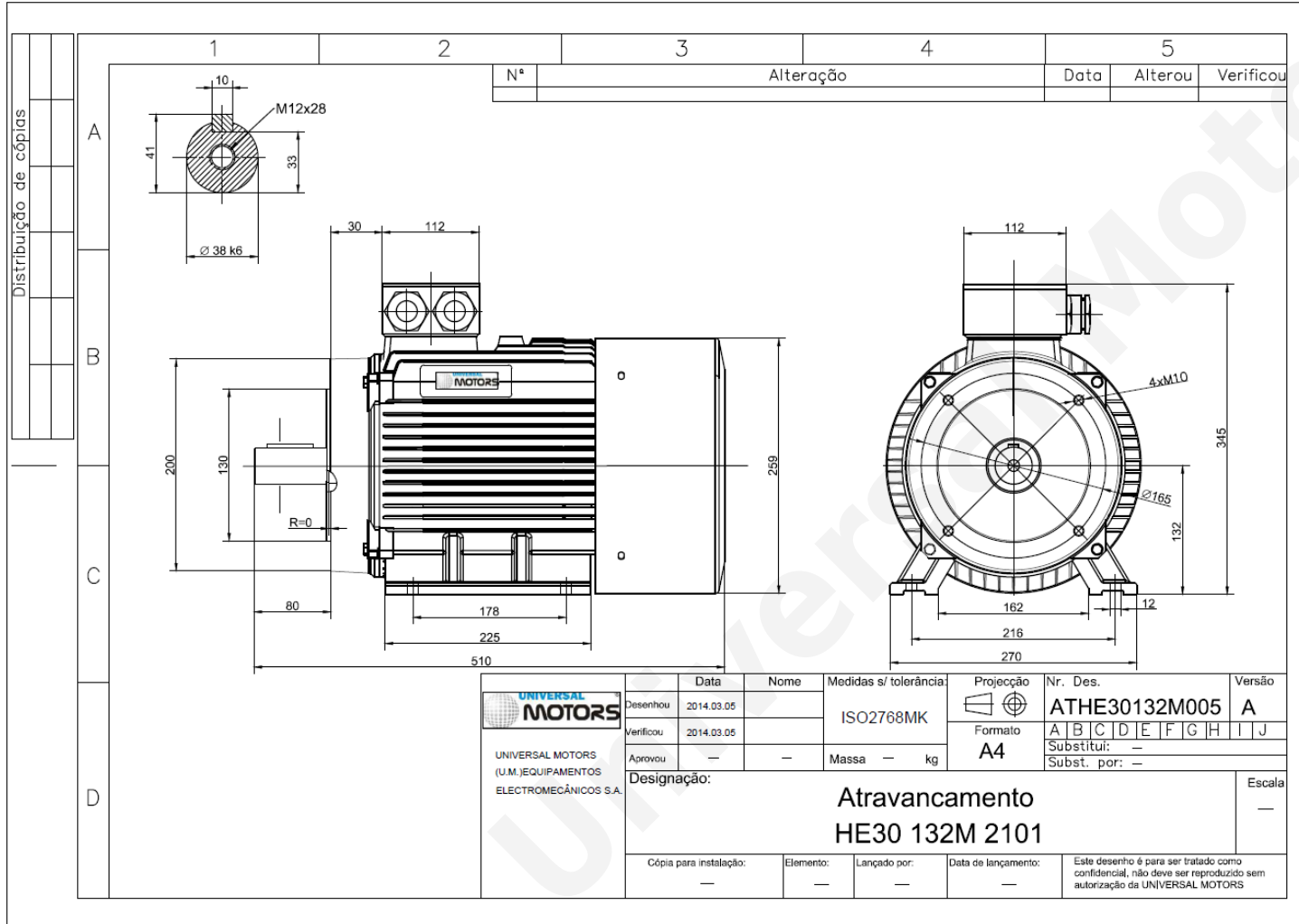




# TECHNICAL DATA

Three Phase Electric Motors - Cast Iron Frame  
 HE30 132 M1 4 IE2  
 7.5 kW / 10 Cv  
 1450 RPM



Motor type:	<b>HE30 132 M1 4 IE2</b>
Output:	<b>7.5 kW / 10 Cv</b>
Speed (min <sup>-1</sup> ):	<b>1450 RPM</b>
Frequency:	<b>50 Hz</b>
Voltage:	<b>400 V</b>
Current:	<b>14.7 A</b>
Power factor (Cos Ø):	<b>0.83</b>
Poles:	<b>4</b>
Insulation class:	<b>F</b>
Temperature rise Class:	<b>B</b>
Efficiency 50%:	<b>88.5 %</b>
Efficiency 75%:	<b>89.4 %</b>
Efficiency 100%:	<b>88.7 %</b>
Torque:	<b>49 N.m</b>
Tstarting/Tnominal:	<b>2.2</b>
Istarting/Inominal:	<b>7.8</b>
Tmaximum/Tnominal:	<b>2.3</b>
Noise:	<b>60 Db(A)</b>
Weight:	<b>128 Kg</b>
Bearing DE:	<b>6308 2Z C3</b>
Bearing NDE:	<b>6308 2Z C3</b>

**Regime - S1**

**Altitude - 1000m**

**Environment Temperature - 40°C**

**CONTACTS:**

UNIVERSAL MOTORS	Tel: +351 252 299 080
Rua de São Brás,745	Fax: +351 252 299 089
4480-782 VILA DO CONDE	Mail: <a href="mailto:geral@universalmotors.pt">geral@universalmotors.pt</a>

\* References applied only in the UK